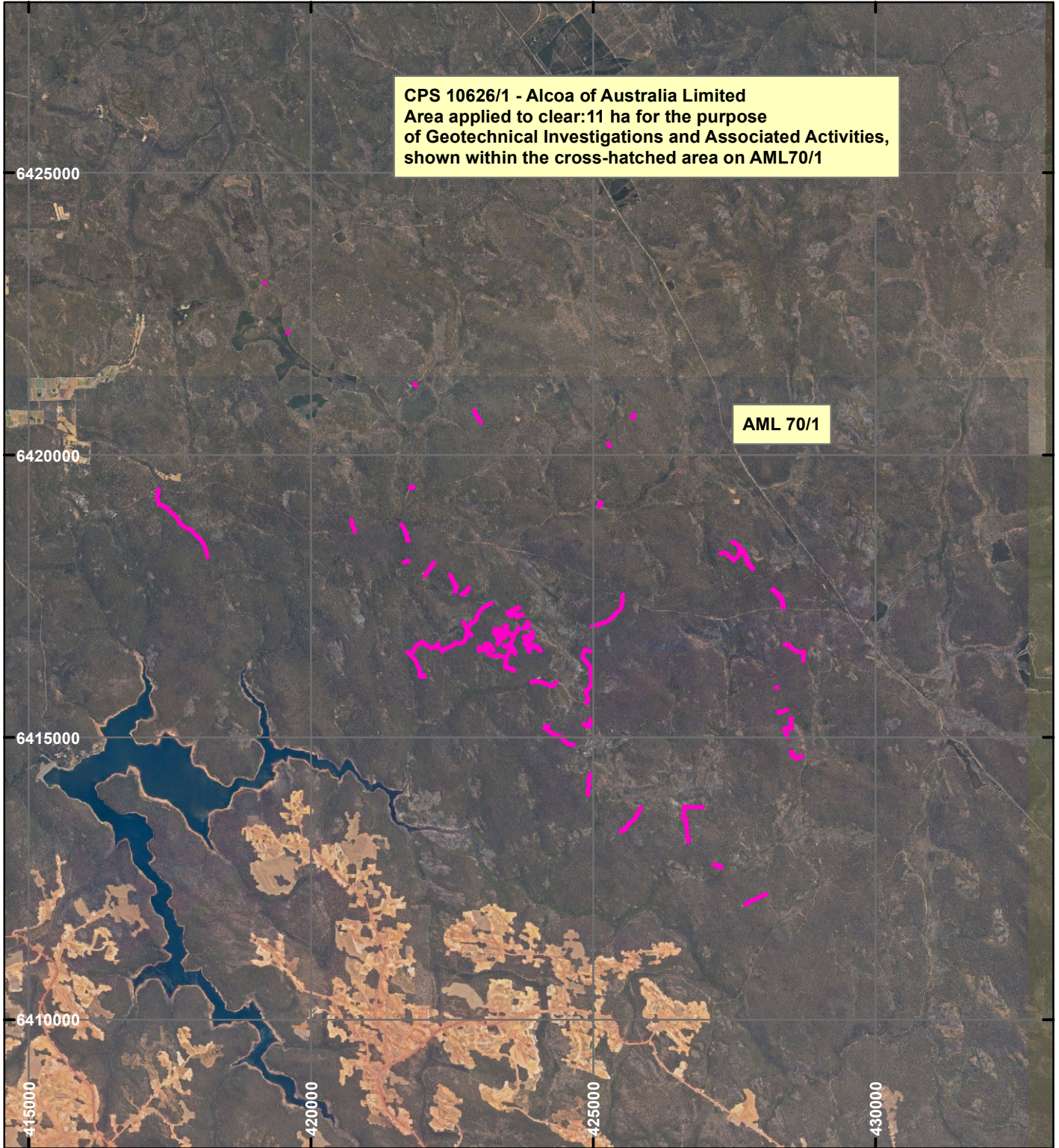
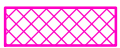


# CPS 10626/1 - Alcoa of Australia Limited



## LEGEND

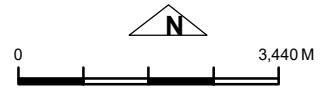


**Clearing Instruments**



**Mining Tenements**

Orthophotography sourced from Landgate



Scale 1:100,000

(Approximate when reproduced at A4)

Geocentric Datum Australia 1994

Note: the data in this map have not been projected. This may result in geometric distortion or measurement inaccuracies.

..... Date .....

Officer with delegated authority under Section 20 of the Environmental Protection Act 1986

Information derived from this map should be confirmed with the data custodian acknowledged by the agency acronym in the legend.



WA Crown Copyright 2002